

AUCTION

TIMED ONLINE



Items are located at 12936 Kress Lane, Bloomfield, IA 52537

Opens: Tuesday, July 28th / Closes: Tuesday, August 4, 2020 at 1PM

Loadout: Thursday, August 6th from 10AM-4PM, with the Steffes loader on site to assist in loading.

Auctioneer's Note: Clarence has sold his home in the country and has decided to sell his Kubota tractors, trailers, ATV, shop equipment & more! This will be a Steffes Group timed online auction. Feel free to call Clarence with questions or to schedule a time to preview the equipment.



TRACTORS

2015 Kubota L3901 HST, 171 hrs., MFWD, diesel, open station, folding ROPS, 3 pt., 540 PTO, hydrostatic drive, diff. lock, Kubota LA525 loader, joystick, quick tach 65" bucket, weld on edge, bucket level indicator, loader lockout, loader stand, (loader S/N R8321), 2XR12000 winch on front w/remote control, front grill guard, rear toolbox, 15x19.5 NHS rears, 27x8.5x15 NHS fronts, fluid in all tires, S/N 63581

2000 Kubota L3130 GST, 592 hrs., MFWD, 12 speed, open station, folding ROPS, 1 hyd., 3 pt., 540 PTO, tilt wheel, suspension seat, LH reverser, diff. lock, foot throttle, Kubota LA723 loader, joystick, quick tach bucket, front grill guard, bucket level indicator, loader lockout, loader stand, (loader S/N 22136), rear toolbox, (6) wheel weights per side, 14.9x24 rears, 8.3x16 fronts, fluid in all tires, S/N 32497

2003 Kubota B7610 HST, 469 hrs., MFWD, hydrostatic, open station, folding ROPS, 3 pt., 540 PTO, diff. lock, power steering, Traveller 4,500 lb. front winch, (5) 55 lb. front weights, grill guard, front ball hitch, rear toolbox, 11.2x16 rears, 7x12 fronts, fluid in all tires, S/N 55256

CUTTERS & ATTACHMENTS

King Kutter, rotary cutter, 7', 540 PTO, 3 pt., dual rear wheels

King Kutter, rotary cutter, 6', 540 PTO, 3 pt., single rear wheel, sells w/dual wheel setup

King Kutter, rotary cutter, 5', 540 PTO, 3 pt.

King Kutter, finish mower, 6', 540 PTO, 3 pt.

Land Pride 1548, rotary cutter, 4', 540 PTO, 3 pt.

Land Pride, blade, 60", 3 pt.

King Kutter, disc, 8", 3 pt., notched front blades, smooth rear blades

Husker, subsoiler, 1-shank, 3 pt., 24" depth from 3 pt.

American Farmland, trip bucket, 30"x30", 3 pt., dirt scoop, rope trip

Wallace, trip bucket, 29 1/2"x30", dirt scoop, rope trip

2-section harrow
Small quick hitch

(2) **Kubota** front weights

PICKUP

2016 Ford F150XL, 10,867 miles, 4WD, automatic, EcoBoost, regular cab, long bed, cloth seat, power windows, power locks, backup camera, Pro Trailer Backup Assist, receiver hitch, matching Leer top, LT285/70T17 tires, VIN 1FTMF1EP1GKE09442, (1 owner)

TRAILERS

2011 Alumina, tandem axle, 18-1/2"x8", 82" between inside fenders, 11" removable wood sides, (2) slide out ramps, 13-1/2" wide, (4) tie-downs, (2) spring loaded tail supports, 9,600 lb. GVWR, brakes, 52" tongue length, 225/75R15 tires, 6-bolt hubs, alum. wheels, VIN 1YGH1827BB067304

2001 Alumina LTD, single axle, 56"x122", 51"x40" ramp, aluminum, 11-1/2" removable wood sides, alum. fenders, Reese jack, 175/80R13 tires, 5-bolt hubs, VIN 1YBUS10141B002061

Shop-Built Single Axle Trailer 42"x92", 24" wood sides, 24" tailgate, 5.70x8 tires

Single Axle Trailer, 64"x112", 2' side boards

Masterforce alum. deck plate, trailer tongue storage box

Challenger alum. deck plate storage box

ATV

2014 Polaris Sportsman 6x6 Big Boss, 141 hrs., 1,312 miles, on-demand AWD, 760 cc, EFI, automatic, reverse, front guard, front & rear Warn winches, rear hitch, shop-built front toolbox, 40"x21", shop-built rear bed box cover, 41"x41", front axle guards, tilt bed, (4) 26x12-12 rear tires, 26x9-12 front tires, VIN 4XACF76A5EB182365

Phoenix 25 gal. ATV sprayer, 12V pump

LAWN EQUIPMENT

2014 Cub Cadet Z-Force L, 99 hrs., zero turn, 60" deck, 25 hp. Kohler, single tank, power wash deck, 20.00x10.00-8 tires, S/N 1A074H20121

DR field & brush mower, 30" cut, 17 hp., Kawasaki, electric start

Poulan Pro, push mower, 22" cut, 8.75 hp. Kohler, 4x4, rear discharge, water washout, bagger, alternate side discharge chute, S/N 4535319428

(2) **Stihl MS201C** chainsaw

Stihl MS 362C chainsaw

Stihl MS 241C chainsaw

Stihl MS 150C chainsaw

Stihl HT133 pole chainsaw, 12', w/ harness assist

Husqvarna push mower, Honda motor, (does not run)

Weed Eater Quatro push mower, 4 hp., (does not run)

Backpack sprayer
Sprayers

SHOP EQUIPMENT

Ingersoll Rand TS4N5, vertical air compressor, 5 hp., 220 V, 1 phase, 80 gal., (1 year old)

Central Machinery metal bandsaw, 1 hp., vertical or horizontal, w/coolant

Dewalt 12" compound DWS708 sliding miter saw, w/Master Force Stand

Delta contractor saw, 10", w/Delta Unifence, 4"x8" platform

DeWalt C012 jobsite radio/charger

DeWalt XRP DW987 cordless drill, 18V

DeWalt XRP DC988 cordless drill, 18V

DeWalt XRP DC410 right angle grinder, 4-1/2" grinder, 18V

DeWalt XRP DW919 floodlight, 18V

DeWalt XRP DC390 circular saw, 6-1/2", 18V

DeWalt DW304P reciprocating saw

DeWalt DW235G VSR drill, 1/2"

DeWalt DW235G VSR drill, 1/2"

(2) **DeWalt DW9116** charger, 7.2V-18V

Bostitch air framing nail gun

Bostitch air roofing nail gun

Lincoln AC 225 arc welder

Champion 4000 generator, 196 cc, electric start

Craftsman toolbox, 26", 10-drawer top, 3-drawer bottom; **Montgomery Ward Powr-Kraft** toolbox, 34", 12-drawer, 10-drawer bottom cabinet;

Black+Decker jigsaw; **Craftsman** palm sander; **Black+Decker** 3/8" drill; **Skilsaw** circular saw; LP tanks & heater; **Craftsman** shop vac, 4 hp.;

Tool Shop belt sander; Pipe wrenches; 42" bolt cutter; Various hand tools; Wood clamps; Bottle jacks; Heavy Duty bench vise; Stihl No. 7 chain vise; 3/4" socket set; Manual tire changer;

Craftsman 3/4 hp. bench grinder on stand; Torch set & cart; Creeper; (2) Antennas & rotors; 2-wheeled cart; Tool Shop air compressor, 3 hp., 5 gal., portable; Air pig; 25 Gal. air compressor, (needs work); Bolt rack & contents; C clamps; Hole saws; Hardware & Electrical Supplies; Die Hard battery charger; 1/2" air impact; Air sander; Box fans; Sump pump; Maul hammers; Alum. 22' multi-ladder; Keller 6' fiberglass step ladder; Keller 32' alum. extension ladder; Werner 28' alum. extension ladder; **Craftsman** 5-1/2 hp. 16 gal. shop vac; (2) sets of car ramps; True Temper wheelbarrow; Post puller; Post pounder; Fence stretcher; Pruners; Plastic toolboxes; Extension cords; Reese hitch & hitches; Gas cans; Ideal 14'x10' overhead (Never Used); Garage door, 8'x7'; Metal siding, various lengths; Barn door railing; Rubber flooring 8' wide

SHOP EQUIPMENT CONTINUED

Approx. (140) cement blocks; Plastic conduit pipe; Rolls of insulation; Lumber, various lengths; Entry door, 32"; 6' fence posts; Barb wire; Gates; Wood posts; Tent; LP tanks; Metal trash cans Tow bar hitch; Antenna base; (3) Michelin 185/65R15 tires w/rims off of 2004 Honda Civic; (4) Goodyear 155/80R13 tires on Honda rims; (4) Michelin P205/60R15 tires; 2004 Ford F150 snow tires; (2) 2004 Honda Civic tires w/chains

GUNS

Pickup of guns will be at Guns LTD., 217 West Washington Street, #101, Mt. Pleasant, IA, 319.385.4080. Please call to schedule after payment. All State & Federal gun laws will be strictly enforced. A local FFL (Guns LTD. John Klopfenstein) will handle all paperwork, with a \$25 transfer fee per gun. Purchase of a hand gun requires a permit. Out of state buyers, please note all guns and firearms must be transferred to an authorized Federal Firearms Licensed gun dealer in your area, all handling, packaging & shipping fees are the buyer's responsibility. Out of state buyers will need to supply FFL information for transfer.

Ruger Mark 1, 22 cal., long rifle

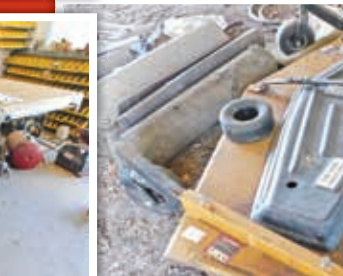
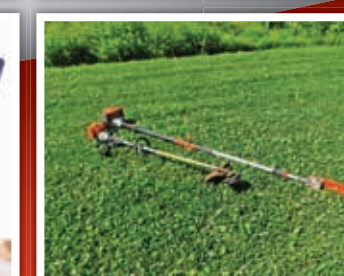
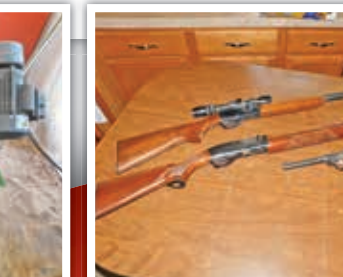
Remington, 22 cal., semi auto, w/ Bushnell Scope

Remington 1100, 12 ga., magnum

WASHER, DRYER & FURNITURE

LG front load gas stackable washer/dryer, washer: 209KWHX80705, dryer: 301KWRE2D094; **Sharp** 70" Smart TV; **Emerson** 50" TV; **Element** 50" TV; **Vizio** 46" TV; **Insignia** 28" TV; **Bose** radio; **Garmin Rinolzo** GPS; 10' spiral staircase; Dining table w/(6) chairs; Kitchen table w/(4) chairs; (2) Matching couches; Recliner; (2) Bar stools; Corner cabinet; Fireplace TV stand; (2) End tables; Dresser w/mirror; Coffee table; (2) Beds; Night stands; Metal detector; Card cable; 9" Laminator

Schwinn Air-Dyne exercise bike; Childs rocker; Wall mirrors; Kitchen base cabinets; Desk & office chair; Egg crates; Wall clock; **Bissell** 3-in-1 Vacuum; Kitchenware & dishes; China dishes; **George Foreman** grill; Toast Master toaster oven; Shovels, rakes & garden tools; Ratchet straps; Fishing waiters; Water skis; Knee board; Lawn chairs; Outdoor furniture; Live traps; Poly lawn shed; Dehumidifier; Coolers; (10) Skulls w/antlers; (3) Burner camp stove & lantern



Complete terms, lot listings & photos at SteffesGroup.com

CLARENCE SCHAFFLEIN, 319.310.0939

For information contact Terry Hoenig of Steffes Group, 319.385.2000 or 319.470.7120

SteffesGroup.com

Steffes Group, Inc., 2245 East Bluegrass Road, Mt. Pleasant, IA 52641 | 319.385.2000

